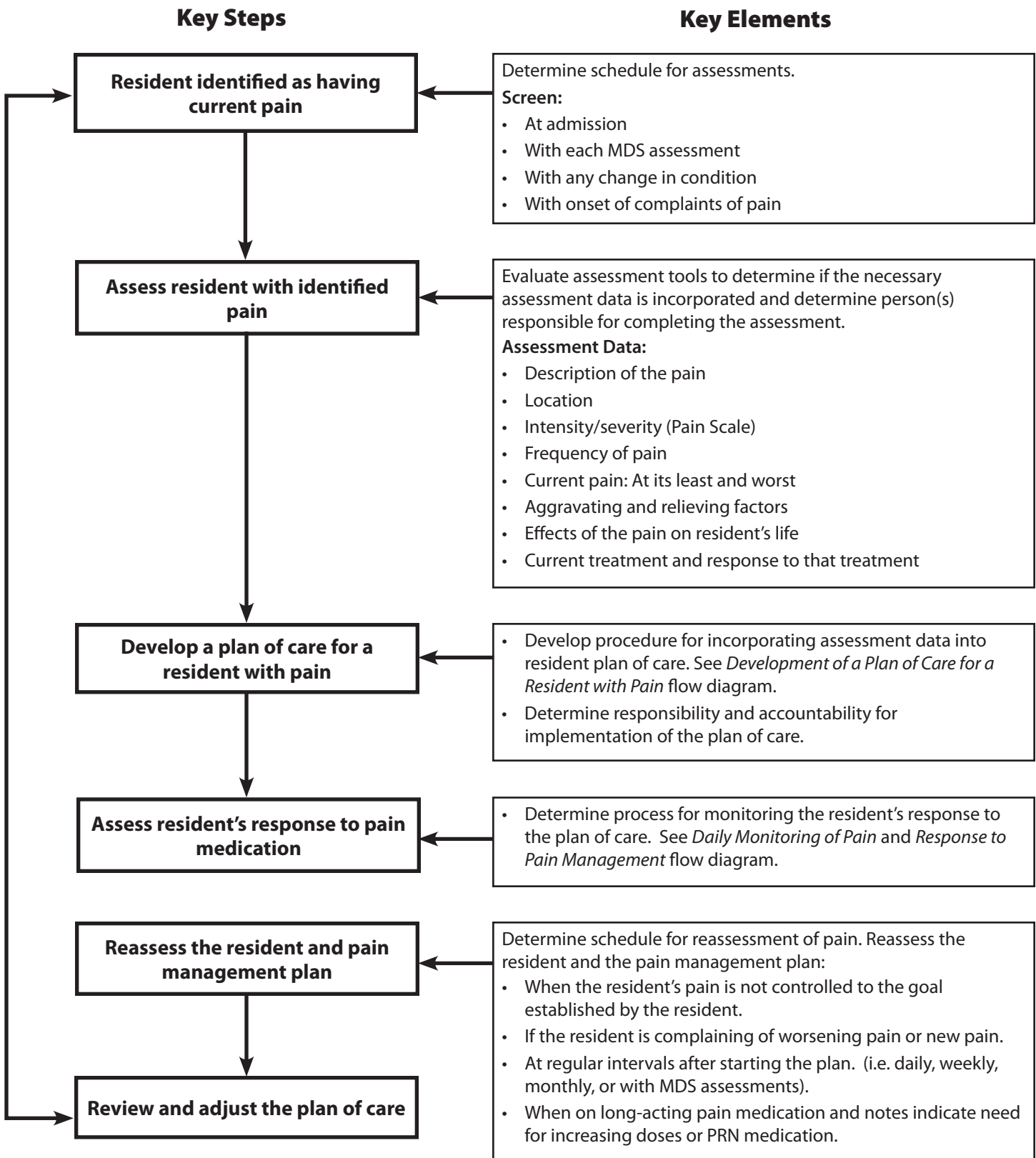




# Pain: Comprehensive Assessment of Pain



Document available at [www.primaris.org](http://www.primaris.org)

**MO-06-11-PAIN June 2006** This material was prepared by Primaris, the Medicare Quality Improvement Organization for Missouri, under contract with the Centers for Medicare & Medicaid Services (CMS), an agency of the U.S. Department of Health and Human Services. The contents presented do not necessarily reflect CMS policy.